

Subtrochantære frakturer

Peter Ivan Andersen

Overlæge

Sygehus Lillebælt Kolding

Hvilke femurfrakturer taler vi om?

- Definition Fra trochanter minor og 5 cm distalt herfor
- Klassifikation AO ?!!

Klassifikation af subtrochantære frakturer

32 Diaphyseal segment

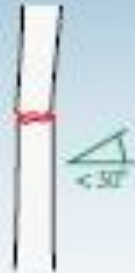
32A1



32A2



32A3



32A Simple fracture

32A1* Spiral

32A2* Oblique ($\geq 30^\circ$)

32A3* Transverse ($< 30^\circ$)

32B2



32B3



32B Wedge

32B2* Intact wedge

32B3* Fragmentary wedge

32C2



32C3

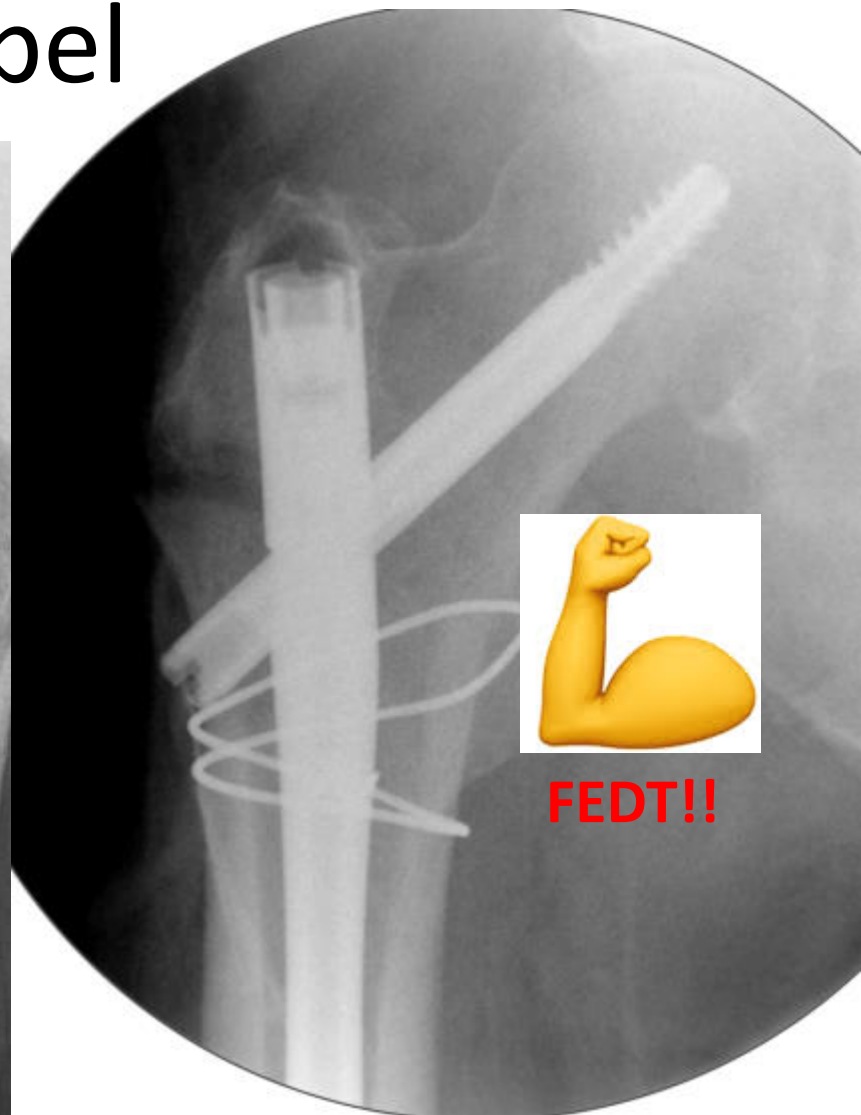


32C Multifragmentary

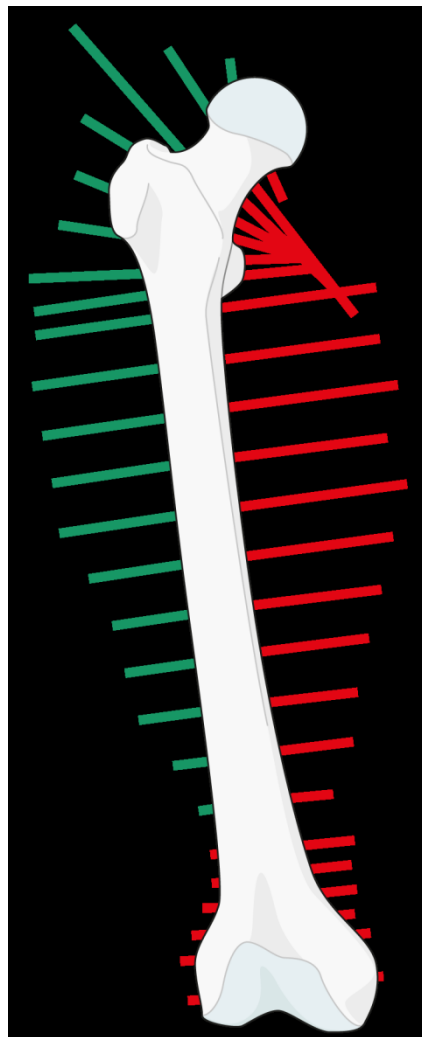
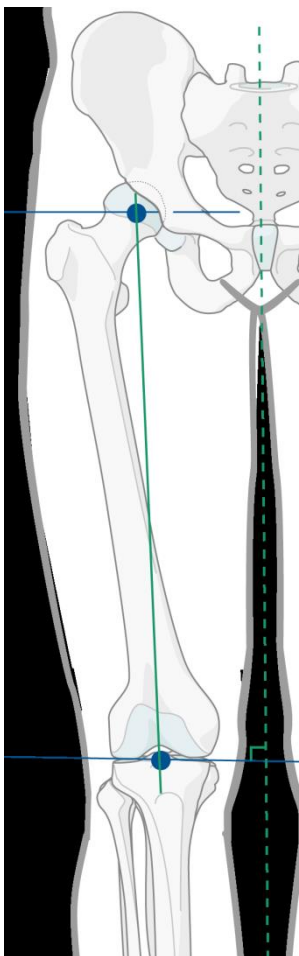
32C2* Intact segmental

32C3* Fragmentary segmental

Eksempel



Hvad skal vi vide – biomekanik?



Store bøjningskræfter



Mangel på medial støtte



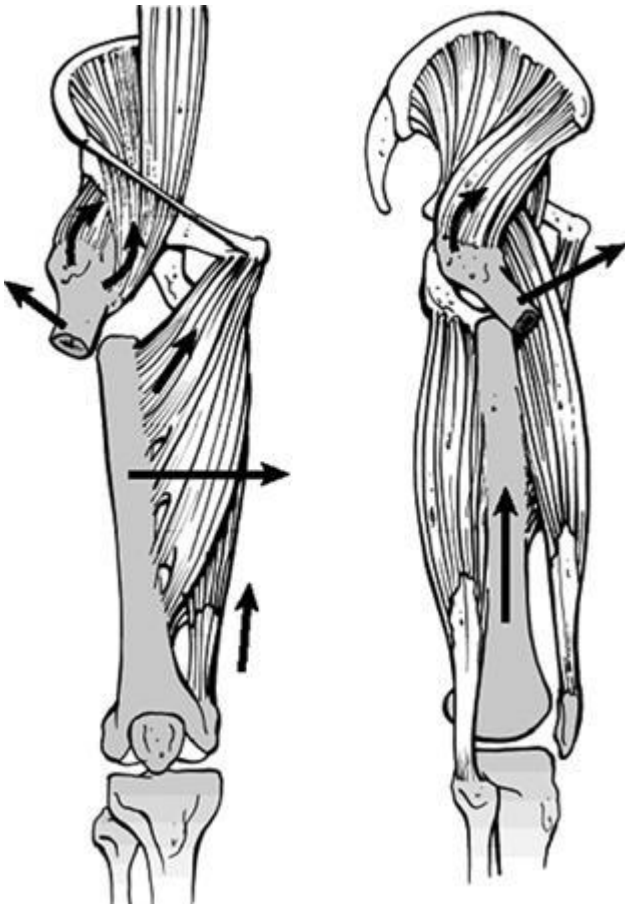
Kræver stor mekanisk styrke hos de anvendte implantater!!



Frakturs personlighed



Hvad skal vi vide – biomekanik II?



Deformerende kræfter:

- Abduktion – gluteus medius+minimus
- Fleksion – iliopsoas
- Udadrotation – piriformis, gemelli+ obt.int.
- Forkortning+adduktion - adduktorene

Operationsteknik

- Lejring?



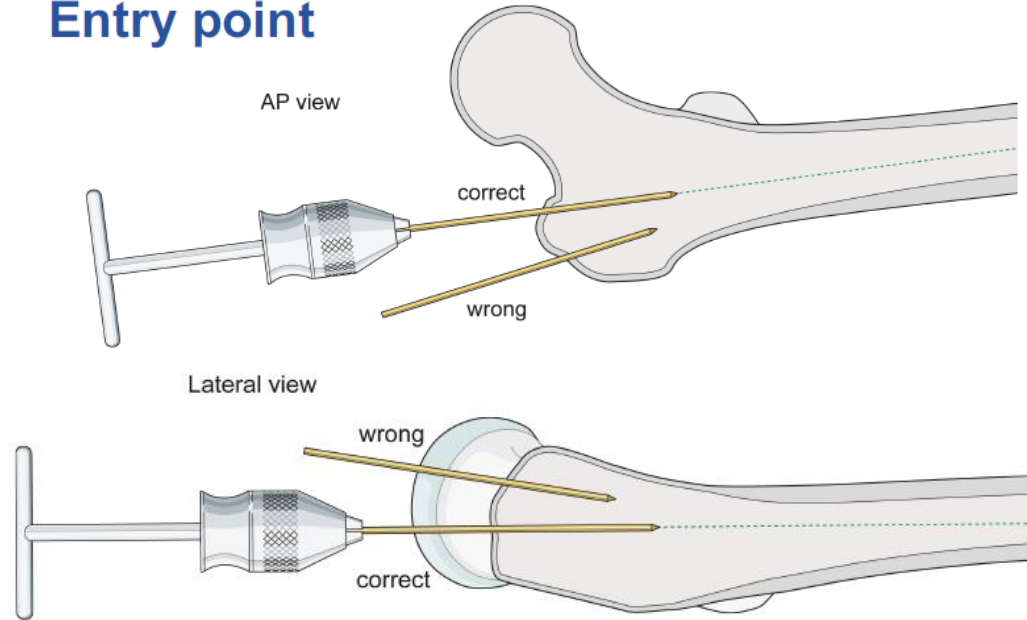
- Reposition



Operationsteknik II

- Entry point?

Entry point



- Andet?



Opsummering

- En subtrochantær fraktur er ikke "et langt gamma"
- En subtrochantær fraktur er "en af de svære"
- Forstå de deformerende kræfter
- Reponer, reponer, reponer – iagttag medial støtte
- Kend dit implantat

Bonus - Kurt



Bonus - Kurt



-Relax Peter, it's just a small cut with a scalpel, don't be nervous.

-Doctor, my name isn't Peter.

-I know, Peter is me...

